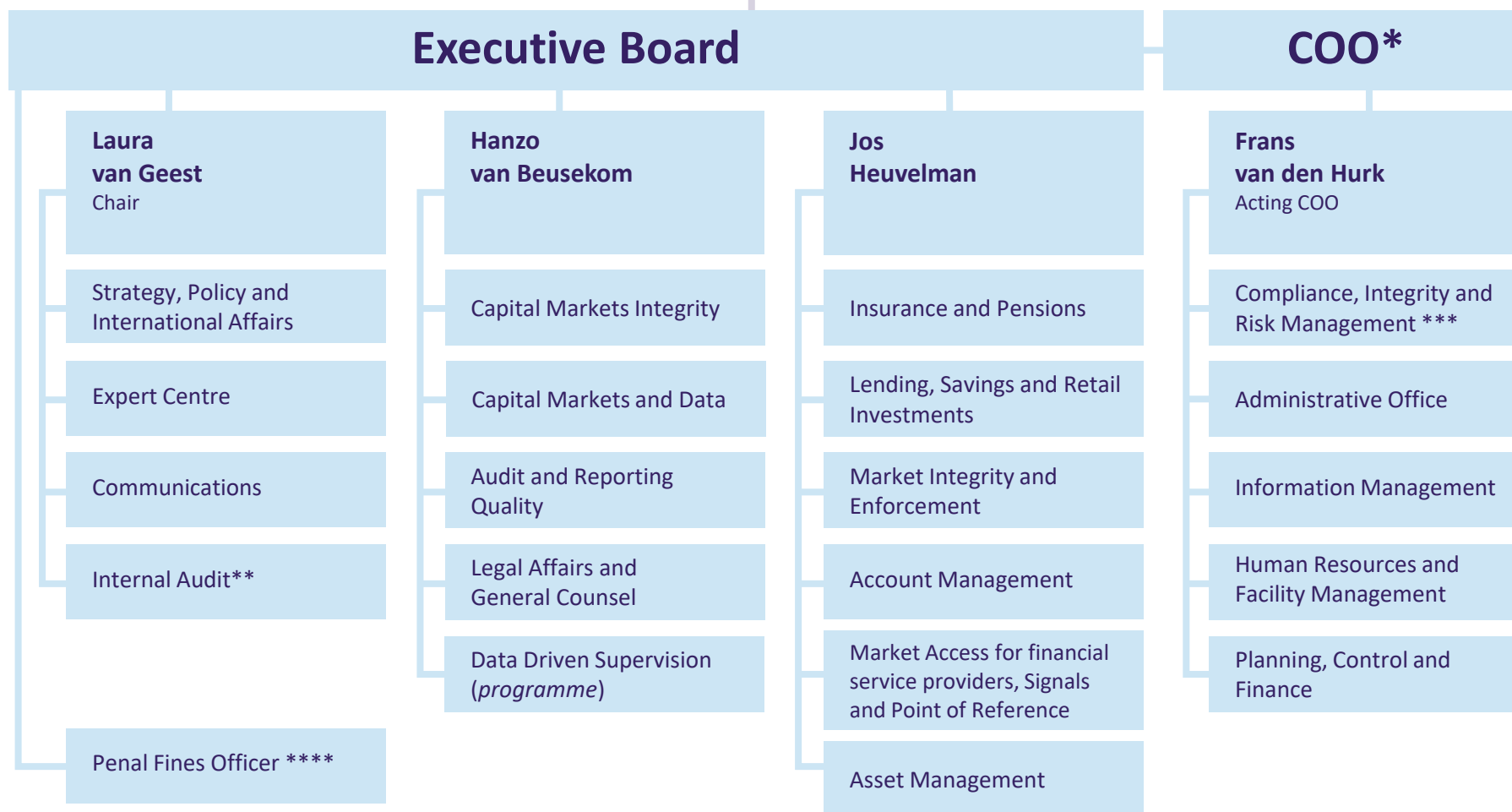


Supervisory Council

Martin van Rijn (Chair), Willemijn van Dolen, Wendy de Jong, David Voetelink, Rob Langezaal



* COO under responsibility of the Chair

** The Head of Internal Audit also reports to the Chair of the Audit Committee of the Supervisory Council

*** The CIR Manager reports directly to the Chair of the Executive Board and the Supervisory Council

**** The Penal Fines Officer advises the Executive Board directly regarding decisions to impose administrative fines