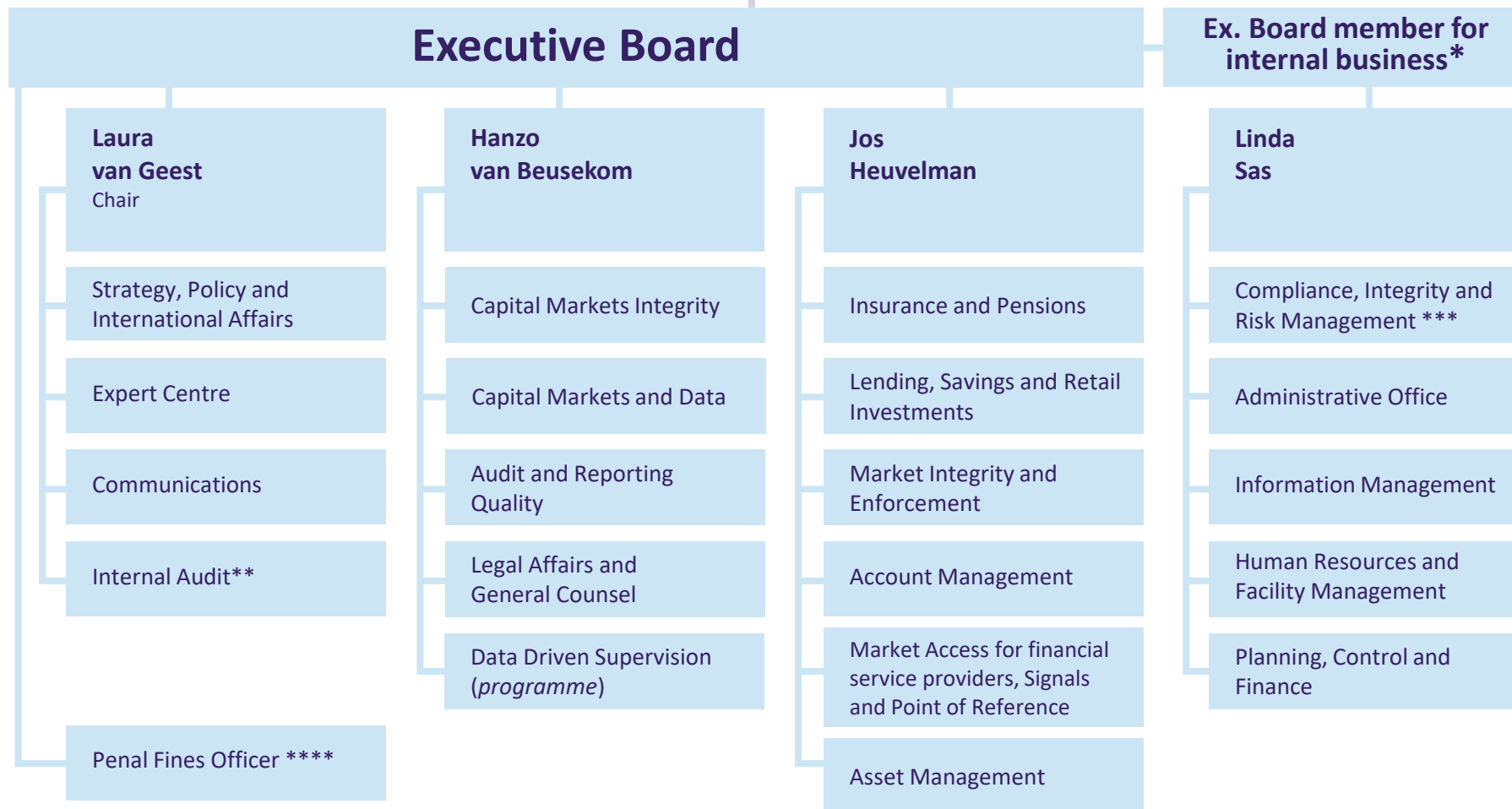


# Supervisory Council

Martin van Rijn (Chair), Willemijn van Dolen, Wendy de Jong, David Voetelink, Rob Langezaal



\* The Executive Board member for internal business is a Board member whose appointment is not mandated by the articles of association. This Board member reports to the Chair of the Executive Board

\*\* The Head of Internal Audit also reports to the Chair of the Audit Committee of the Supervisory Council

\*\*\* The CIR Manager reports directly to the Chair of the Executive Board and the Supervisory Council

\*\*\*\* The Penal Fines Officer advises the Executive Board directly regarding decisions to impose administrative fines